

# Giblor's

italian work/life specialist



**2022 COLLECTION**

GILET E GREMBIULI / WAISTCOATS AND APRONS

# & Ho.Re.Ca. SERVICES

Il lavoro con il pubblico è fatto di sollecitudine,  
dedizione e piccole attenzioni.  
Si realizza appieno nel delicato equilibrio tra  
dettagli classici e gradite sorprese.

*Working with the public is made of solicitude,  
dedication and small attentions. It is fully realized  
in the delicate balance between classic details  
and pleasant surprises.*

Esattamente ciò che la linea **Giblor's**  
**Ho.Re.Ca & Services** offre a  
te, che ti dedichi ad offrire servizi capaci di  
accendere il sorriso sul volto di ogni cliente.  
Anche il più esigente.

*Exactly what the **Giblor's** line **Ho.Re.Ca**  
**& Services** offers a you, dedicated to  
offering services capable of light up the smile on  
every customer's face.  
Even the most demanding.*

Capi eleganti e funzionali, con una vestibilità  
perfetta e con la massima coordinabilità:  
abbiamo creato per te una collezione ampia  
e varia, che spazia da pezzi senza tempo alle  
ultime novità del design.

*Elegant and functional garments, with a perfect  
fit and with maximum coordination: we have  
created an extensive collection for you and  
varied, ranging from timeless pieces to  
latest design news.*

Il mix perfetto tra impegno e stile.

*The perfect mix between commitment and style.*

**Giblor's**  
italian work/life specialist



# Be yourself

PERSONALITÀ,  
PROFESSIONALITÀ,  
PASSIONE.

Sono ingredienti alla base di ogni successo. Diventano eccellenza se arricchiti con cura per i dettagli e capacità di armonizzare sapientemente tradizione e innovazione.

Noi di Giblor's lo sappiamo bene.

È per questo che il nostro impegno quotidiano punta a creare capi in grado di esprimere al massimo la tua unicità. Perché scegliere tra comfort e stile se puoi avere tutto? Vogliamo darti la possibilità di definirti anche attraverso ciò che indossi. Noi saremo al tuo fianco ogni giorno, per aiutarti a lavorare al meglio.

A modo tuo.



# wear Giblor's

PERSONALITY,  
PROFESSIONALISM,  
PASSION.

*They are the basic ingredients of every success. They become excellence if enriched with care for details and ability to harmoniously harmonize tradition and innovation.*

*We at Giblor's know that well.*

*This is why our daily commitment aims at create garments that can express your uniqueness to the fullest. Why choose between comfort and style if you can have it all? We want to give you the opportunity to define yourself also through what you wear. We will be by your side every day, for help you work at your best.*

*Your way.*

## ho.re.ca. & services

Gilet e grembiuli coordinati  
Matching waistcoats and aprons

# MIGUEL

### Dettagli / Details

- Foderato
- 2 tasche
- 4 bottoni

- Lined
- 2 pockets
- 4 buttons

### Taglie / Sizes

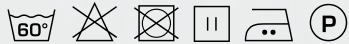
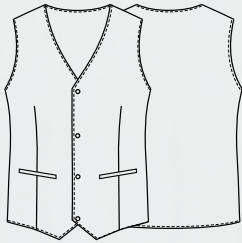
S ÷ XXXL Regular Fit

### Art. 22P01E305

J004 Jeans blu / Blue jeans

### Tessuto / Fabric

62% cotone 35% poliestere 3% elasthan  
62% cotton 35% polyester 23% elastane  
180 g / m<sup>2</sup>





## CORA

### Dettagli / Details

- Foderato
- 2 tasche
- 4 bottoni

- Lined
- 2 pockets
- 4 buttons

### Taglie / Sizes

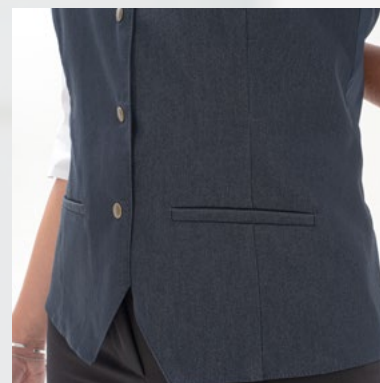
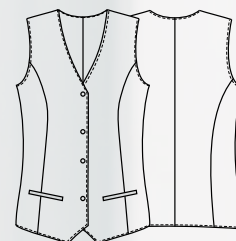
XS ÷ XXL Slim Fit

### Art. 22P01E306

J004 Jeans Blu / Blue jeans

### Tessuto / Fabric

62% cotone 35% poliestere 3% elasthan  
62% cotton 35% polyester 23% elastane  
180 g / m<sup>2</sup>





## ALABAMA

### Dettagli / Details

- 2 tasche
- 3 taschini portapenne
- Allacciatura collo regolabile

- 2 pockets
- 3 pen pockets
- Adjustable halter

### Taglie / Sizes

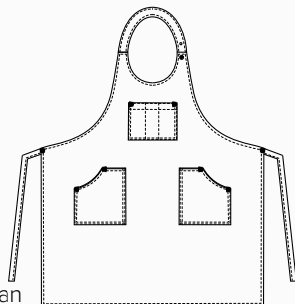
Taglia unica / One size

### Art. 22P01H307

J004 Jeans blu / Blue jeans

### Tessuto / Fabric

62% cotone 35% poliestere 3% elastan  
62% cotton 35% polyester 3% elastane  
180 g / m<sup>2</sup>



## MISSOURI

### Dettagli / Details

- 1 tasca

- 1 pocket

### Taglie / Sizes

Taglia unica / One size

### Misure / Dimensions

80x90 cm

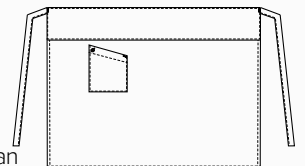


### Art. 22P01H308

J004 Jeans blu / Blue jeans

### Tessuto / Fabric

62% cotone 35% poliestere 3% elastan  
62% cotton 35% polyester 3% elastane  
180 g / m<sup>2</sup>







## ho.re.ca. & services

Gilet e grembiuli coordinati  
Matching waistcoats and aprons

# CORA

### Dettagli / Details

- 2 tasche
- 4 bottoni
- Fascette regolabili

- 2 pockets
- 4 buttons
- Adjustable buckles

### Taglie / Sizes

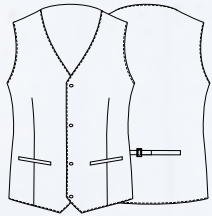
XS ÷ XXL Slim Fit

### Art. 20P01E150

S322 Scozzese moro / Scottish brown

### Tessuto / Fabric

68% poliestere 30% viscosa 2% elasthan  
68% polyester 30% viscose 2% elastane  
175 g / m<sup>2</sup>







COMFORT

ho.re.ca. & services

Gilet e grembiuli coordinati  
Matching waistcoats and aprons

## DOUGLAS

### Dettagli / Details

- 1 tasca
- 4 taschino portapenne
- Allacciatura collo regolabile

- 1 pocket
- 4 pen pockets
- Adjustable halter

### Taglie / Sizes

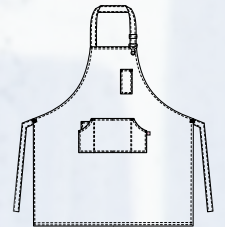
Taglia unica / One size

### Art. 20P01H013

S322 Scozzese moro / Scottish brown

### Tessuto / Fabric

68% poliestere 30% viscosa 2% elasthan  
68% polyester 30% viscose 2% elastane  
175 g / m<sup>2</sup>







Grembiule **LIONE**

Grembiule **SCOTLAND**



## TROPEZ

### Dettagli / Details

- 2 tasche
- 1 taschino portapenne
- Allacciatura collo regolabile
- Inserti in Alcantara
- Anello porta torcione

- 2 pockets
- 1 pen pocket
- Adjustable halter
- Alcantara inserts
- Cloth ring

### Taglie / Sizes

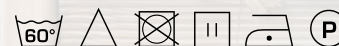
Taglia unica / One size

### Art. 20P01H149

073 Beige / Beige  
322 Marrone / Brown  
019 Grigio chiaro / Light grey

### Tessuto / Fabric

100% poliestere  
100% polyester  
170 g / m<sup>2</sup>



Art. 20P01H149  
019 Grigio / Grey



## ho.re.ca. & services

Gilet e grembiuli coordinati  
Matching waistcoats and aprons

# RENO

### Dettagli / Details

- 2 tasche - 1 taschino portapenne
- Allacciatura collo regolabile con bottoni

- 2 pockets - 1 pen pocket
- Adjustable halter with buttons

### Taglie / Sizes

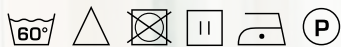
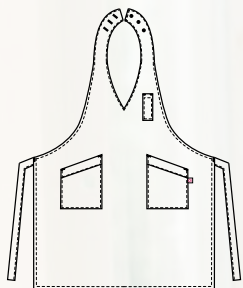
Taglia unica / One size

### Art. 20P01H152

G000 Gessato nero  
G000 Black pinstripe

### Tessuto / Fabric

99% poliestere 1% viscosa  
99% polyester 1% viscose  
170 g / m<sup>2</sup>



# RODANO

### Dettagli / Details

- 1 tasca

- 1 pocket

### Taglie / Sizes

Taglia unica / One size

### Misure / Dimensions

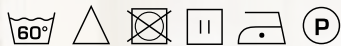
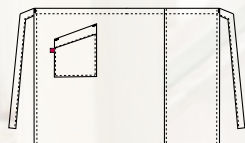
70x98 cm

### Art. 20P01H154

G000 Gessato nero  
G000 Black pinstripe

### Tessuto / Fabric

99% poliestere 1% viscosa  
99% polyester 1% viscose  
170 g / m<sup>2</sup>



Art. 20P01H152  
G000 Nero / Black

Art. 20P01H154  
G000 Nero / Black



## SENNA

### Dettagli / Details

- 2 tasche
- Allacciatura collo regolabile con bottoni
- 2 pockets
- Adjustable halter with buttons

### Taglie / Sizes

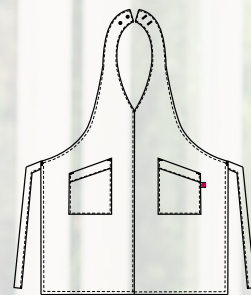
Taglia unica / One size

### Art. 20P01H153

G119 Gessato grigio  
G119 Grey pinstripe

### Tessuto / Fabric

99% poliestere 1% viscosa  
99% polyester 1% viscose  
170 g / m<sup>2</sup>



## RODANO

### Dettagli / Details

- 1 tasca
- 1 pocket

### Taglie / Sizes

Taglia unica / One size

### Misure / Dimensions

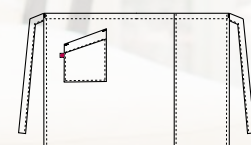
70x98 cm

### Art. 20P01H154

G119 Gessato grigio  
G119 Grey pinstripe

### Tessuto / Fabric

99% poliestere 1% viscosa  
99% polyester 1% viscose  
170 g / m<sup>2</sup>



Art. 20P01H153  
G119 Grigio / Gray

Art. 20P01H154  
G119 Grigio / Gray



## ho.re.ca. & services

Gilet e grembiuli coordinati  
Matching waistcoats and aprons

# GEORGIA

### Dettagli / Details

- 2 tasche
- Allacciatura collo regolabile

- 2 pockets
- Adjustable halter

### Taglie / Sizes

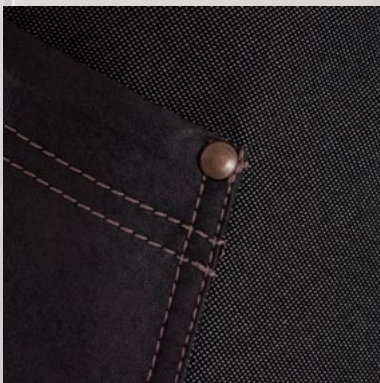
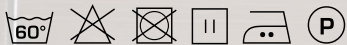
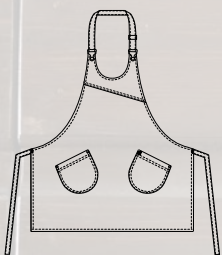
Taglia unica / One size

### Art. 22P01H312

016 Tortora / Taupe

### Tessuto / Fabric

100% poliestere  
100% polyester  
220 g / m<sup>2</sup>





## MONTANA

### Dettagli / Details

- 1 grande tasca
- 2 tasche
- Allacciatura collo regolabile
- 1 big pocket
- 2 pockets
- Adjustable halter

### Taglie / Sizes

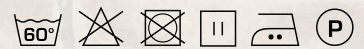
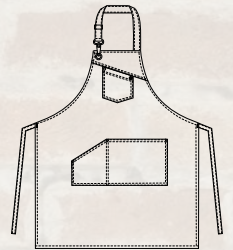
Taglia unica / One size

### Art. 22P01H311

016 Tortora / Taupe

### Tessuto / Fabric

100% poliestere  
100% polyester  
220 g / m<sup>2</sup>





## ho.re.ca. & services

Gilet e grembiuli coordinati  
Matching waistcoats and aprons

# LUNA

### Dettagli / Details

- 2 tasche
- Allacciatura collo regolabile con velcro

- 2 pockets
- Adjustable halter with velcro

### Taglie / Sizes

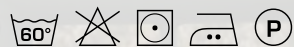
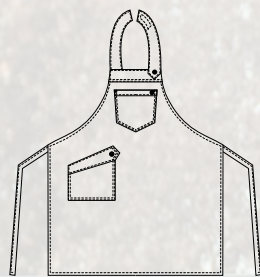
Taglia unica / One size

### Art. 22P01H069

J222 Jeans marrone chiaro  
J222 Light brown jeans

### Tessuto / Fabric

100% cotone  
100% cotton  
321 g / m<sup>2</sup>





## BROOKLYN

### Dettagli / Details

- 1 grande tasca
- 1 taschino portapenne
- Allacciatura collo regolabile

- 1 big pocket
- 1 pen pocket
- Adjustable halter

### Taglie / Sizes

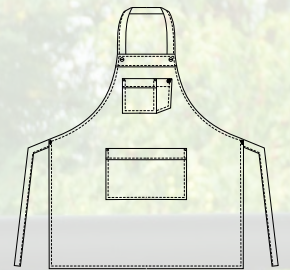
Taglia unica / One size

### Art. 22P01H315

J222 Jeans marrone chiaro  
J222 Light brown jeans

### Tessuto / Fabric

100% cotone  
100% cotton  
321 g / m<sup>2</sup>





## ho.re.ca. & services

Gilet e grembiuli coordinati  
Matching waistcoats and aprons

# TUCSON

### Dettagli / Details

- 2 tasche
- 3 taschini portapenne
- Allacciatura collo regolabile
- Laccio collo removibile

- 2 pockets
- 3 pen pockets
- Adjustable halter
- Removable necklace

### Taglie / Sizes

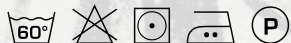
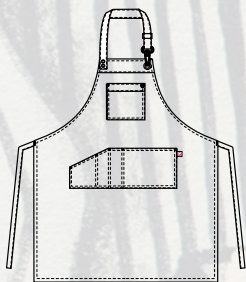
Taglia unica / One size

### Art. 20P01H161

000 Nero / Black  
102 Verde militare / Military green

### Tessuto / Fabric

85% cotone 15% poliestere  
85% cotton 15% polyester  
290 g / m<sup>2</sup>





## DAKOTA

### Dettagli / Details

- 2 tasche
- 2 taschini portapenne
- Allacciatura collo regolabile
- Inserti in finta pelle
- 2 pockets
- Pen pocket
- Adjustable halter
- Fake leather inserts

### Taglie / Sizes

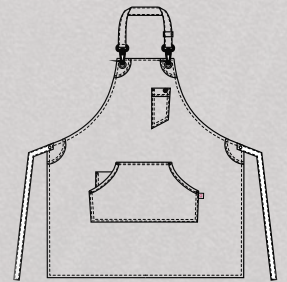
Taglia unica / One size

### Art. 20P01H160

117 Ocra / Ochre  
119 Grigio / Grey

### Tessuto / Fabric

100% cotone  
100% cotton  
260 g / m<sup>2</sup>





## ho.re.ca. & services

Gilet e grembiuli coordinati  
Matching waistcoats and aprons

# OREGON

### Dettagli / Details

- 3 tasche
- Allacciatura collo regolabile
- Anello porta torcione

- 3 pockets
- Adjustable halter
- Cloth ring

### Art. 22P01H067

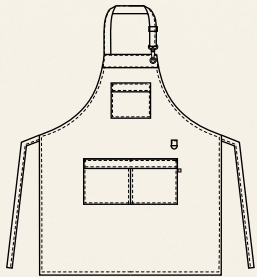
R102 Rigato verde / Striped green

### Taglie / Sizes

Taglia unica / One size

### Tessuto / Fabric

85% cotone 15% poliestere  
85% cotton 15% polyester  
275 g / m<sup>2</sup>





## OREGON

### Dettagli / Details

- 3 tasche
- Allacciatura collo regolabile
- Anello porta torcione
- 3 pockets
- Adjustable halter
- Cloth ring

### Art. 19P01H067

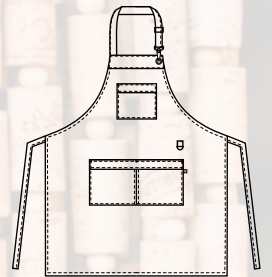
R006 Rigato bordeaux / Striped burgundy  
R004 Rigato blu / Striped blue

### Taglie / Sizes

Taglia unica / One size

### Tessuto / Fabric

85% cotone 15% poliestere  
85% cotton 15% polyester  
275 g / m<sup>2</sup>





**Giblor's**  
italian worklife specialist



**PICASSO**  
Art. 19P01H081





**GAUGUIN**  
Art. 19P01H079

**MAGRITTE**  
Art. 19P01H080



## ho.re.ca. & services

Gilet e grembiuli coordinati  
Matching waistcoats and aprons

# UTAH

### Dettagli / Details

- 1 tasca
- 2 taschini portapenne
- Allacciatura collo regolabile

- 1 pocket
- 2 pen pockets
- Adjustable halter

### Taglie / Sizes

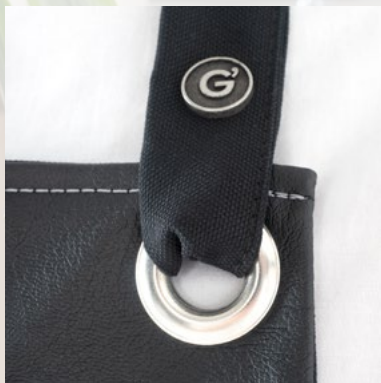
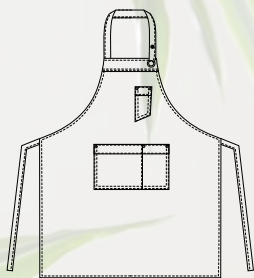
Taglia unica / One size

### Art. 22P01H319

000 Nero / Black

### Tessuto / Fabric

65% poliestere 35% cotone  
65% polyester 35% cotton  
310 g / m<sup>2</sup>





## JERSEY

### Dettagli / Details

- 1 tasca
- 3 taschini portapenne
- Allacciatura collo regolabile
- Porta torcione

- 1 pocket
- 3 pen pockets
- Adjustable halter
- Cloth holder

### Taglie / Sizes

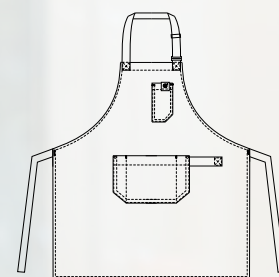
Taglia unica / One size

### Art. 22P01H314

J000 Jeans nero / Black jeans

### Tessuto / Fabric

75% cotone 23% poliestere 2% elasthan  
75% cotton 23% polyester 2% elastane  
210 g / m<sup>2</sup>





## ho.re.ca. & services

Gilet e grembiuli coordinati  
Matching waistcoats and aprons

# JERSEY

### Dettagli / Details

- 1 tasca
- 3 taschini portapenne
- Allacciatura collo regolabile
- Porta torcione

- 1 pocket
- 3 pens pockets
- Adjustable halter
- Cloth holder

### Art. 22P01H313

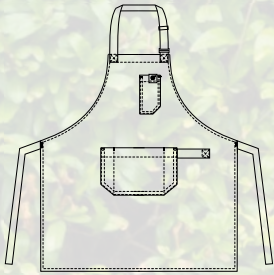
- 000 Nero / Black
- 019 Grigio chiaro / Light Grey
- 102 Verde militare / Military green
- 016 Tortora / Taupe
- 322 Marrone / Brown
- 006 Bordeaux / Burgundy
- 004 Blu / Blue

### Taglie / Sizes

Taglia unica / One size

### Tessuto / Fabric

65% poliestere 35% cotone  
65% polyester 35% cotton  
200 g / m<sup>2</sup>



Art. 22P01H313  
004 Blu / Blue





**Art. 22P01H313**  
000 Nero / Black



**Art. 22P01H313**  
019 Grigio chiaro / Light Grey



**Art. 22P01H313**  
102 Verde militare / Military green



**Art. 22P01H313**  
016 Tortora / Taupe



**Art. 22P01H313**  
322 Marrone / Brown



**Art. 22P01H313**  
006 Bordeaux / Burgundy



**Art. 22P01H313**  
004 Blu / Blue





**ELETTRA**  
Art. 19P01H455  
214 Petrolio / *Petroleum blue*

**AMSTERDAM**  
Art. 19P01H440  
214 Petrolio / *Petroleum blue*



# ELETTRA

## Dettagli / Details

- 1 tasca  
- Allacciatura collo regolabile con velcro
- 1 pocket  
- Adjustable halter with velcro

## Taglie / Sizes

Taglia unica / One size

**Art. 14P02H455**  
**Art. 15P01H455**  
**Art. 19P01H455**

## Tessuto / Fabric

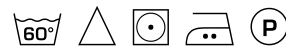
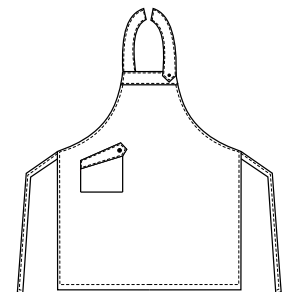
65% poliestere 35% cotone  
65% polyester 35% cotton  
200 g / m<sup>2</sup>



**Art. 14P02H455**  
016 Tortora / Toupe

**Art. 15P01H455**  
7014F Moka / Moka

**Art. 15P01H455**  
000 Nero / Black



**Art. 19P01H455**  
006 Bordeaux / Burgundy

**Art. 19P01H455**  
033 Corallo / Coral

**Art. 19P01H455**  
214 Petrolio / Petroleum blue

**Art. 19P01H455**  
122 Bruciato / Burnt





# AMSTERDAM

**Dettagli / Details**

- 2 tasche
- 2 pockets

**Taglie / Sizes**

Taglia unica / One size

- Art. 14P01H440
- Art. 15P01H440
- Art. 1100
- Art. 19P01H440

**Tessuto / Fabric**

65% poliestere 35% cotone  
65% polyester 35% cotton  
200 g / m<sup>2</sup>



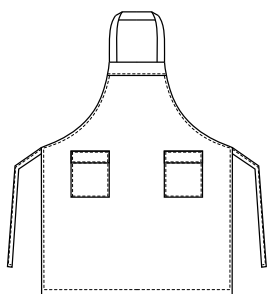
**Art. 14P01H440**  
016 Tortora / Taupe



**Art. 15P01H440**  
7014F Moka / Moka



**Art. 1100**  
000 Nero / Black



**Art. 1100**  
006 Bordeaux / Burgundy



**Art. 19P01H440**  
033 Corallo / Coral



**Art. 19P01H440**  
214 Petrolio / Petroleum blue



**Art. 19P01H440**  
122 Bruciato / Burnt





# Giblor's

italian worklife specialist



## COLLEZIONE 2022

Scarica il catalogo completo su [giblors.com](https://giblors.com)





# Giblor's

italian work*life* specialist



Viale dei Trasporti, 6/A - 6/B  
41012 CARPI (MO) - Italy  
Tel. +39.059.654.602 Fax + 39.059.654.634  
[www.giblors.com](http://www.giblors.com) [info@giblors.com](mailto:info@giblors.com)